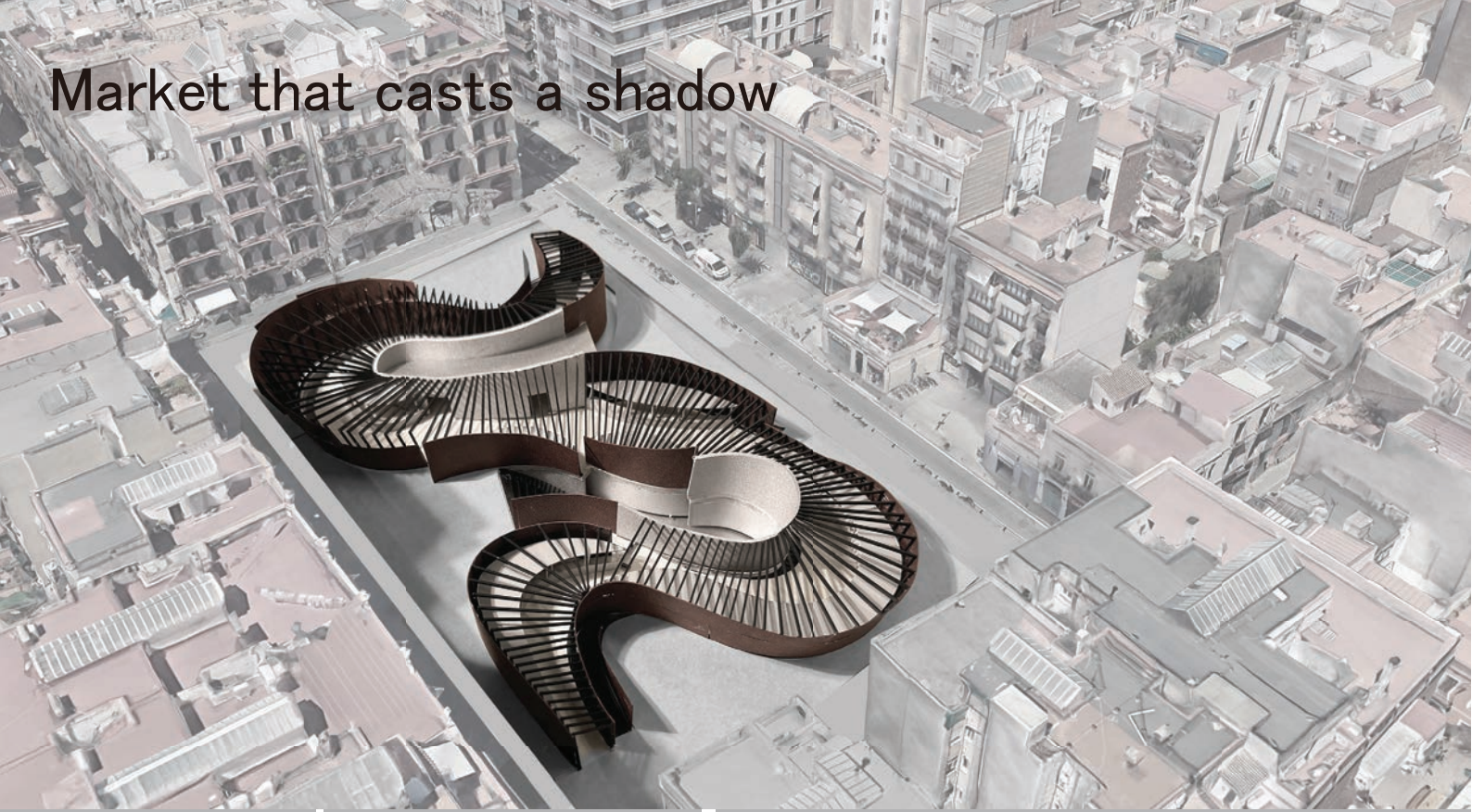


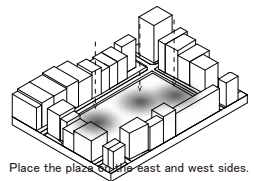
Market that casts a shadow



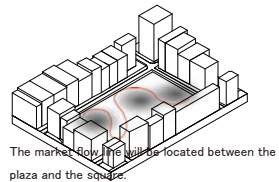
0.1 diagram

0.2 structure

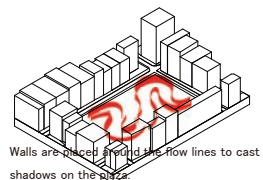
0.3 section detail



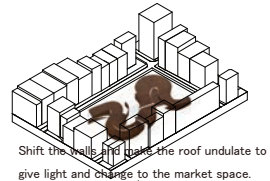
Place the plaza on the east and west sides.



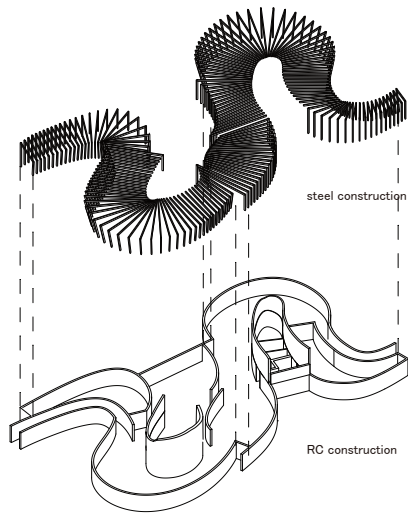
The market flows through the building located between the plaza and the square.



Walls are placed around the flow lines to cast shadows on the plaza.

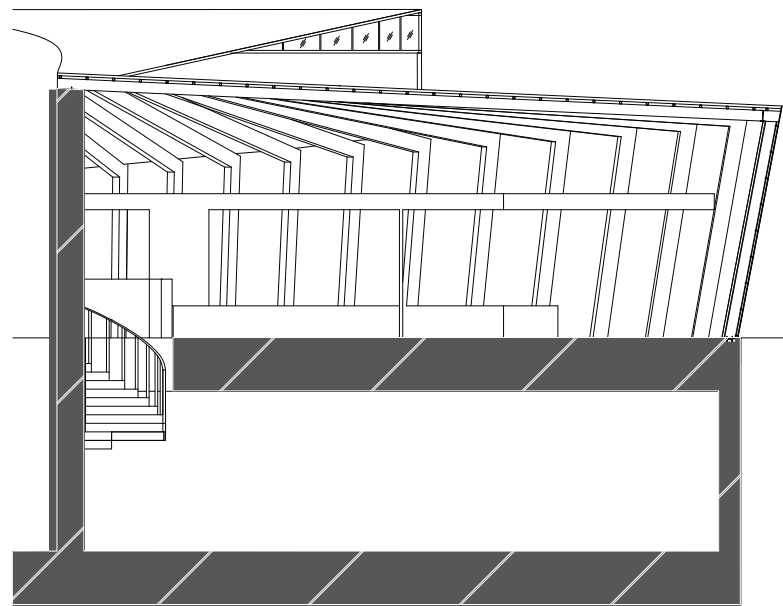


Shift the walls and make the roof undulate to give light and change to the market space.



steel construction

RC construction



The Corten steel wall facing the street is supported by a steel frame. The steel frame is catalan vaulted with varying beam heights. The walls located on the interior of the site are reinforced concrete and consist of a mixed structure with an underground retaining wall supporting the steel frame above ground.

scale=1/50

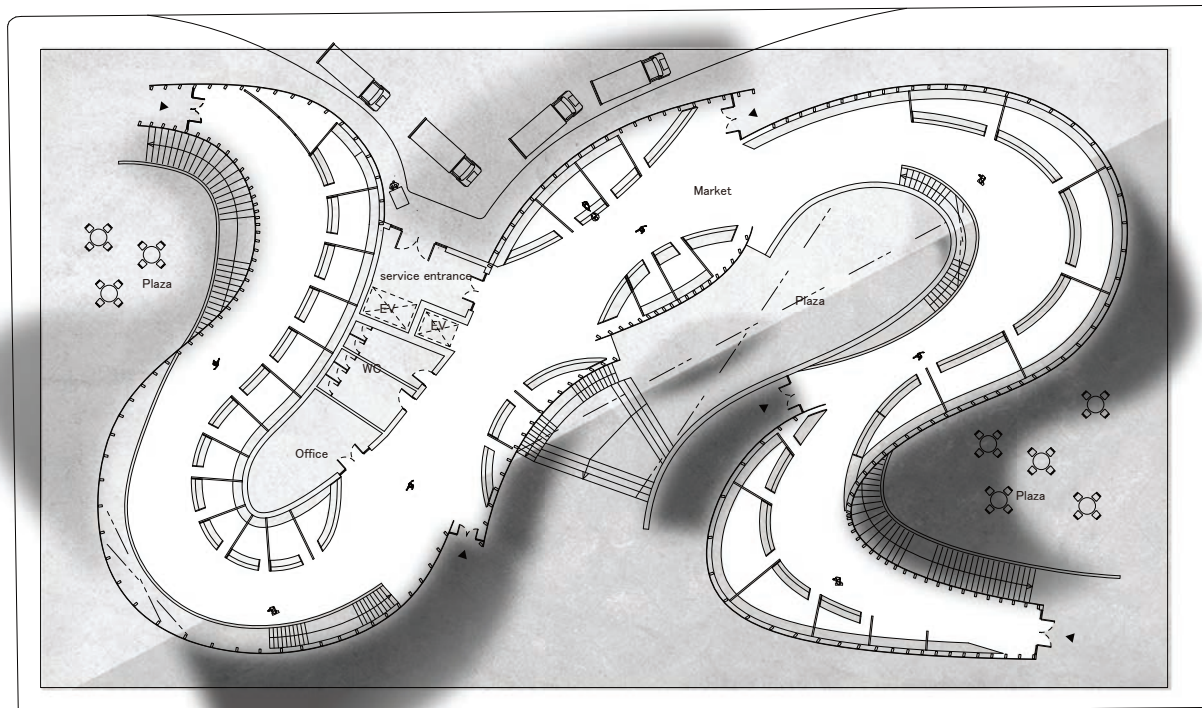
0.2 section



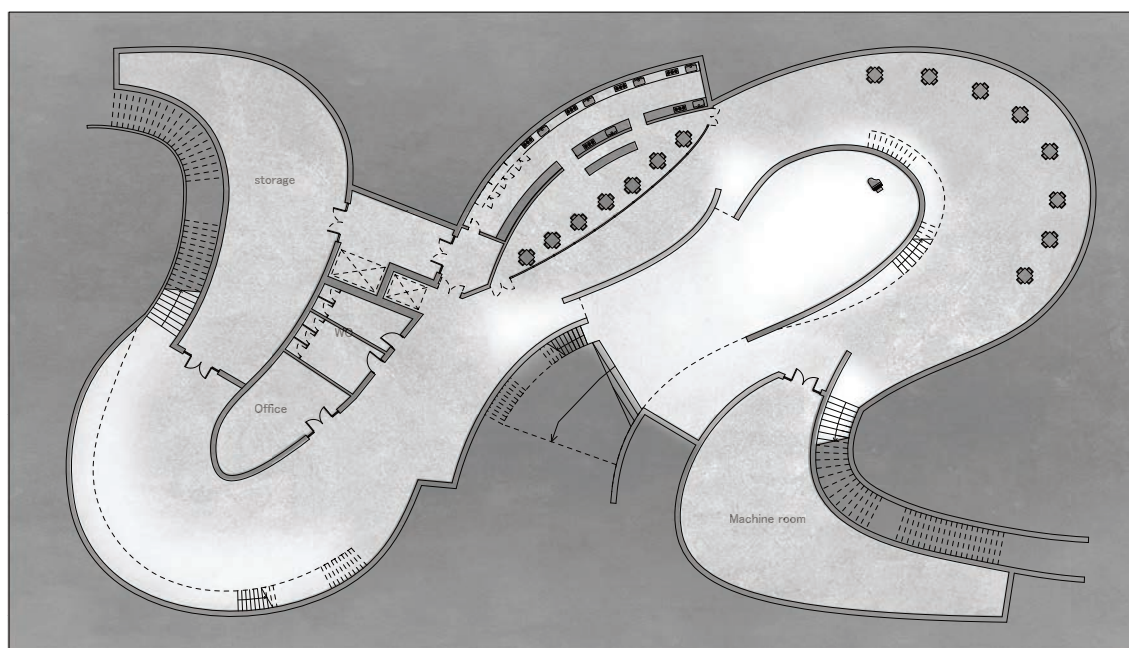
Market

Plaza

scale=1/200



1F scale=1/200



BF scale=1/200

0.4 scene

